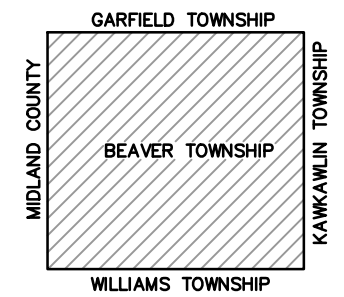


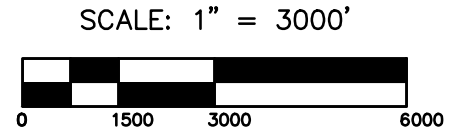
**LOCATION MAP**



**LEGEND**

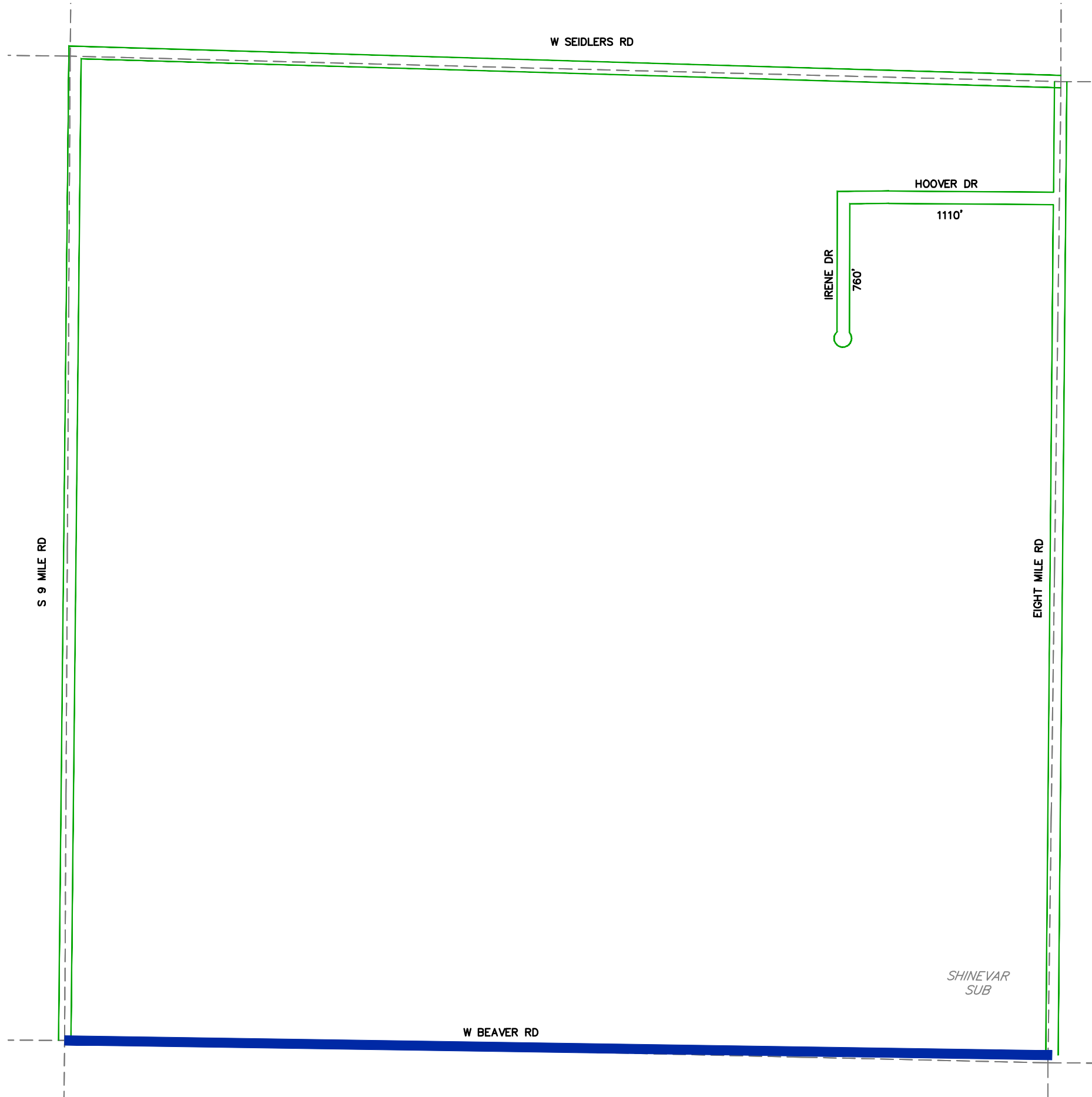
- ADJACENT COUNTY
- CITY, VILLAGE OR PRIVATE STREET
- URBAN LIMITS
- COUNTY PRIMARY ROADS
- COUNTY LOCAL ROADS
- STATE TRUNK LINE
- RAILROADS
- CITY OR VILLAGE LIMITS
- SECTION LINES

PRIMARY ROAD SYSTEM 24.18 MILES  
 LOCAL ROAD SYSTEM 44.37 MILES



REVISED BY: CLW  
 DATE: 05/05/14

**BEAVER TOWNSHIP**  
 T.15 N. - R.03 E.  
 BAY COUNTY



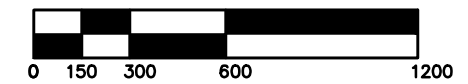
**LEGEND**

- SECTION LINES
- ADJACENT COUNTY
- CITY, VILLAGE OR PRIVATE STREET
- URBAN LIMITS
- COUNTY PRIMARY ROADS
- COUNTY LOCAL ROADS
- STATE TRUNK LINE
- RAILROAD TRACKS
- CITY OR VILLAGE LIMITS

TOTAL FEET 1,870 = 0.35 MILES



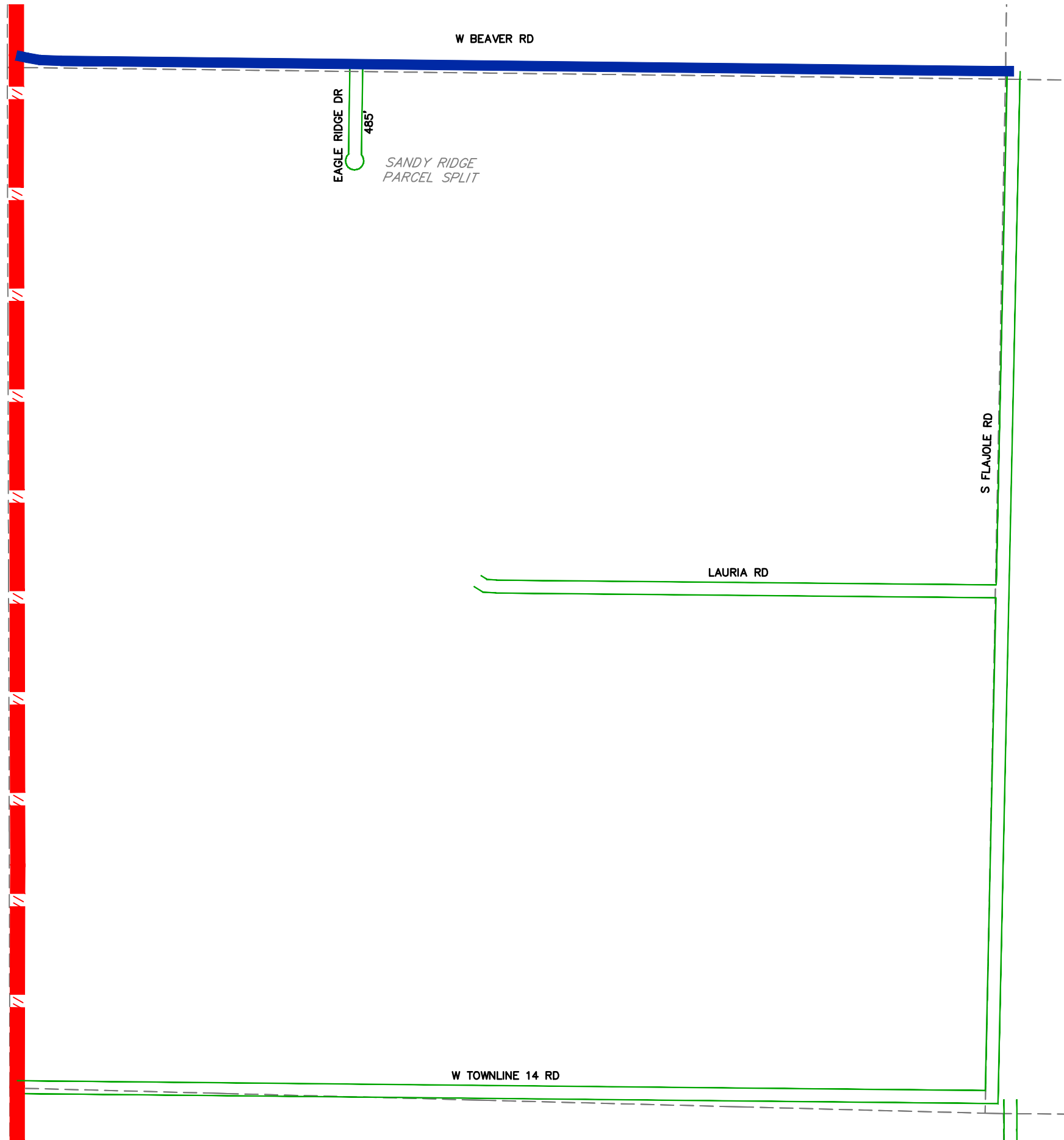
SCALE: 1" = 600'



REVISED BY: CLW

DATE: 05/05/14

BEAVER TOWNSHIP  
SECTION 25  
T.15 N. - R.03 E.  
BAY COUNTY



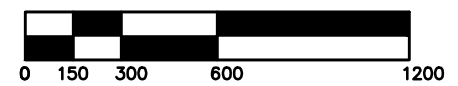
**LEGEND**

- SECTION LINES
- ADJACENT COUNTY
- CITY, VILLAGE OR PRIVATE STREET
- URBAN LIMITS
- COUNTY PRIMARY ROADS
- COUNTY LOCAL ROADS
- STATE TRUNK LINE
- RAILROAD TRACKS
- CITY OR VILLAGE LIMITS

TOTAL FEET 485 = 0.09 MILES



SCALE: 1" = 600'



REVISED BY: CLW

DATE: 05/05/14

BEAVER TOWNSHIP  
SECTION 31  
T.15 N. - R.03 E.  
BAY COUNTY